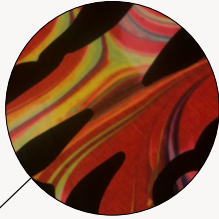


# SUBLIMATION PAPERS FOR DARK & CLEAR TEXTILES

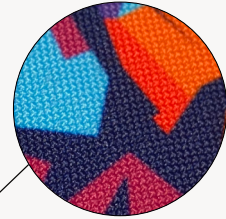


## LIBERTY PRINT S701A



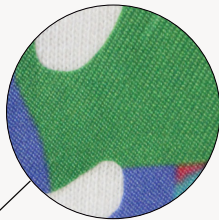
- 👍 Very soft touch
- 👍 Thin & elastic
- 👍 Quick to weed

## LIBERTY PATCH S901T



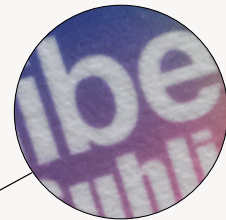
- 👍 Thick & opaque
- 👍 Woven polyester with embroidery look

## LIBERTY PATCH SUBLI TWILL S904T



- 👍 Twill woven polyester
- 👍 Thin

## LIBERTY PATCH SUBLI SOFT S903T



- 👍 Soft & non-woven polyester
- 👍 Good value for money

## LIBERTY PATCH SUBLI SATIN S902T



- 👍 Woven satin polyester
- 👍 Unique shiny finish

## LIBERTY PATCH SUBLI BLOCKSUB S901TBS



- 👍 Anti-resublimation
- 👍 Thick & opaque
- 👍 Woven polyester with embroidery look



# liberty Subli print™

# liberty Patch™ Subli print

	SUBLIMATION			TRANSFER ON TEXTILE		F	W	Cotton	Polyester	Polycotton	Nylon	Sublimated polyester / softshell	
	🔥	🔄	📄	🔥	🔄								📄
Liberty Subli	-	-	-	140°C	15s	Hot	150µ	30°C	✓	✓	✓	✓	
Liberty Patch Subli	190°C	50s	Hot	150°C	20s	Hot	300µ	60°C*	✓	✓	✓	✓	
Liberty Patch Subli Twill	190°C	50s	Hot	150°C	20s	Hot	230µ	60°C*	✓	✓	✓	✓	
Liberty Patch Subli Soft	190°C	50s	Hot	150°C	20s	Hot	280µ	60°C*	✓	✓	✓	✓	
Liberty Patch Subli Satin	170°C	80s	Hot	150°C	20s	Hot	210µ	60°C*	✓	✓	✓	✓	
Liberty Patch Subli Blocksub	190°C	50s	Hot	140°C	5s	Hot	380µ	40°C					✓

No need to use an application tape for simple shapes. For pre-spaced patterns, please use UNITAPE 503

\*On nylon textiles: 40°C

LIBERTY Subli Print & LIBERTY Patch Subli Print are printable **Zero solvent** heat-adhesive film. Producing **vibrant colours**, they can be transferred on **clear AND dark textiles including cotton!**



**YOUR CFP FLEX PRODUCTS DISTRIBUTED BY:**



## CONTACT US

7 rue Edouard Garet  
42160 Andrézieux-Bouthéon  
FRANCE  
[www.cfpflex.com](http://www.cfpflex.com)

**Tel:** +33 (0)4 77 42 65 90  
**Fax:** +33 (0)4 77 32 65 24  
**Email:** [info@cfpflex.com](mailto:info@cfpflex.com)